

Welcome to Year 4



Establish - Nurture - Grow

This afternoon we'll be discussing:

- Staff working in Year 4
- The new term and what the children will be learning about
- Timetable
- Communication platforms
- Year group page on the website
- School Life app
- Assessment
- Homework
- Spellings
- PE/Forest School sessions
- Reading expectations
- Trips, Themed Days and Special Events (Academic Diary Dates)
- How parents can best support their child's learning



Staff working in Year 4

Miss Winwood 4W

Miss Hackett 4H

Mrs Hart

Miss Harris



Be Ready



Be Respectful



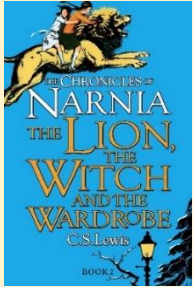
Be Safe

Belle Vue Primary & Nursery School



Establish – Nurture – Grow

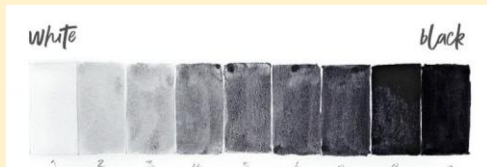
Class Novels



The Lion, the
Witch and the
Wardrobe

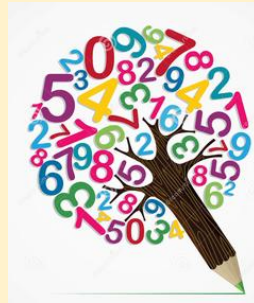
Art

Light
Space (object)



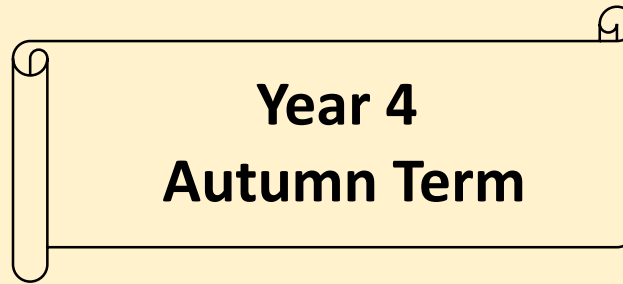
History

Ancient Rome



Maths

Place value
Addition and
Subtraction
Multiplication and
Division
Fractions



French

Welcome to School

English

Fiction- The Monster Slayer
Non-Fiction Explanation Text-The Human Body



Computing

Coding



PE

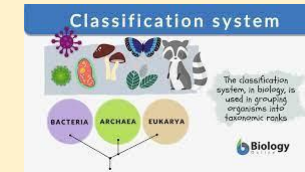
Netball
Football



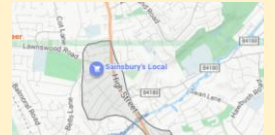
Science

The Human Body

Classification of Plants
and Animals

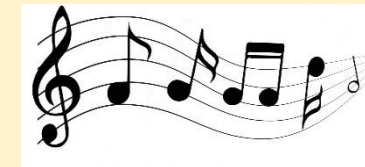


Geography
Spatial Sense



RE

Multifaith culture and
religion



Music

Musical Structures

Our weekly timetable

	8.50 9:05	9.05- 9:20	9:20 10:15	10:15 10:30	10:30 10:45	10:45 11:15	11:15 11:45	11:45 12:15	12.15 1.15	1.15 1.30	1.15 2.15	2.15 3.15	3.15 3.30
Mon	Registration & Morning Task	Handwriting	History/Geog	Assembly	Break	French	TTrockstars	Reading	Lunch	English		Maths	Class Novel
Tues		Handwriting	Maths	Assembly		Spelling	English	Reading		Fluency Bee	Science	RE	
Wed		Handwriting	PSHE	Assembly		Spelling	English	Reading		Fluency Bee	English/Maths focus	4W – Music 4H – Computing	
Thurs		Handwriting	Maths	Class Assembly		Spelling	English	Reading		PE		PE	
Fri		Handwriting	Maths	Praise Assembly		Spelling	English	Reading		Fluency Bee	Art	PSHE	



Communication Platforms

- Key messages for parents will be communicated by the school office via School Life App.
- Copies of letters are sent out to parents via emails and uploaded to the school website.
- Key dates are published on our website (Academic Diary Dates).
- Google Form links that can not be shared publicly for safeguarding reasons will be emailed to families.
- Newsletters will be issued every fortnight and available on the School Life app and uploaded to the website.



Year Group page on our website



Establish - Nurture - Grow



Belle Vue
Primary School

[Home](#)

[About Us](#) ▾

[Key Info](#) ▾

[Children](#) ▾

[Parents](#) ▾

[Community](#) ▾

[Year groups](#)



Establish - Nurture - Grow



Year groups



Nursery



Year 4



Year 5

School Life App

- News/updates/information and reminders will be sent via School Life App
- All parents should have their own log in details. If you haven't, please contact the office.
- Parents Evening appointments will be booked via the School Life App
- Newsletters will be sent out via the School Life App
- Messages can be sent to individual parents/teacher via the School Life App.

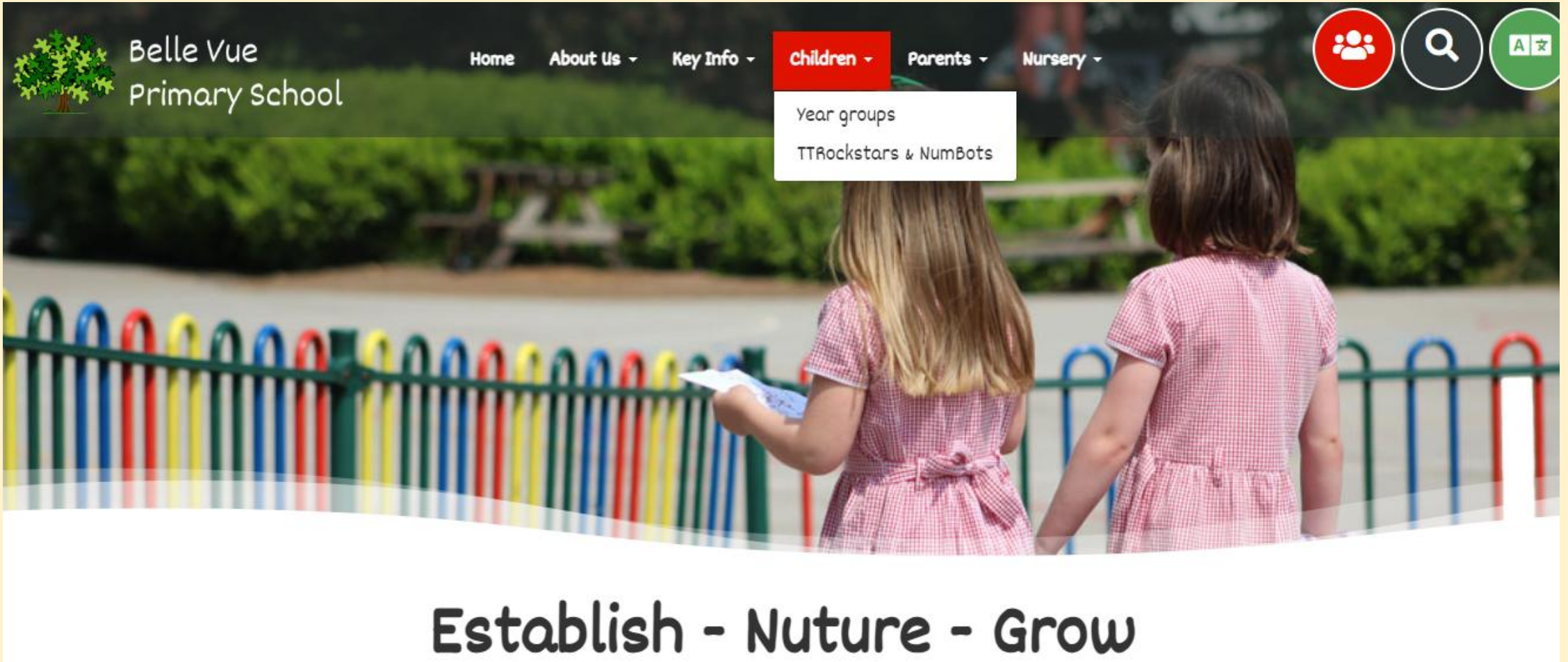


Assessment

- We are assessing your children all the time in various ways.
- Our questions and activities are planned to help us constantly assess whilst we are teaching.
- Children will sit termly assessments in Maths, Reading and GaPS. Some children will also sit Phonics assessments.
- Fluency assessments in Reading.
- MCQ in Art, Geography, History and Science (results recorded)
- Writing is teacher assessed every half term
- In year 4, children will also take the Multiplication timetable check, which will take place in summer term.



TT Rockstars/NumBots Information





TTRockstars Information

Learning times tables is a crucial skill for primary-aged children, forming the foundation for more advanced maths such as division, fractions, and problem-solving. Regular daily practice—even just 5 minutes a day—helps build speed, confidence, and accuracy, supporting long-term success in maths.

Please encourage your children to practise their times tables every day.

Children can earn their Rock Status by practising regularly on Times Tables Rock Stars, with weekly certificates presented in school to celebrate their progress and achievements.

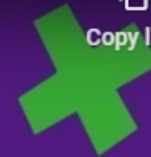
Look out for whole school 'Battle of the Bands' competitions throughout the year!



What is Times Tables Rock Stars? Parents and Carers Guide



Copy link



Children will be going home with logins and information this week.

Homework

- Homework is set in accordance with our SMART homework policy.



www.timetables.co.uk - multiplication check practice tests

Hit the Button (Top Marks website)

Spelling- Top Marks website
Superbrainybeans website

Spellings (will be sent home soon)
Timestables
Reading



Spellings

- Any statutory spelling lists and spelling word lists for a year group will be on year group pages (KS2 only)
- Spellings are taught phonetically, using phonemes and graphemes
- Children are taught a phoneme and then each year group focuses on certain graphemes that represent that phoneme.
- Over a week, children will look at least 12 words containing the phoneme focus.
- On a Friday, the children will sit a spelling test on those 12 words and a further 3-10 taken from the same phoneme focus but a previous year group word list.



Handwriting

- We use the handwriting scheme 'Letter Join'. Handwriting is taught daily and children have chance to practise the letters/joins.
- We expect children to use and implement the letters/joins they have learnt in handwriting, in their independent writing in all lessons.
- The following username and password will let you log on to Letter Join at home:

Pupil Log-in:

Tablet log-in
User name: qr0470
Swipe code: A capital 'L' shape starting at top left.

PC log-in
User name: qr0470
Account Password: home

MDM log-in
If you are using an MDM system, please copy the following link: [MDM Login Link](#)
You can use the following file for the icon: [Icon Link](#)

Free Play for Pupils: ▼
If you have changed the Class Names (see below), you can disable the Free Play option for pupils so they only choose a Class Name.



PE

- P.E is on a **Thursday** for both classes.
- Each class will have a block of sessions for forest school- one session each week. . Dates and information relating to this will be sent out closer to the time.
- Hair will need to be tied back for both PE and Forest School.
- ALL children must have the correct PE kit.
- Earrings must be removed on the days children have PE (if they have not been removed then they must be taken out by the child themselves or covered with plasters)

Forest School

- Each class will have a block of sessions for forest school- one session each week. Dates and information relating to this will be sent out closer to the time.
- Hair will need to be tied back for both PE and Forest School.
- Earrings must be removed on the days children have PE (if they have not been removed then they must be taken out by the child themselves or covered with plasters).
- Long trousers for Forest School and preferably long sleeve tops.
- Always bring in a waterproof coat for Forest School and dress appropriately for the current time of year.
- Please send a set of spare clothes in, when your child has Forest Schools, in case they get extremely wet or dirty.

Swimming

4W have started swimming on a Wednesday afternoon - we have 4/6 sessions left after today.

4H will start swimming on Wednesday 22nd October.



Reading expectations

- Children should be taking their reading book home every night and reading at home every day.
- Even 10 minutes before bedtime will help children increase their range of vocabulary and their wider knowledge of the world.
- Children choose from a set group of colours based on their most recent assessment reading-age range - this will change throughout the year based on reading assessments.

"The more you **read**
the more **things** you know.
The more that you **learn**
the more **places** you'll go."
-Dr. Seuss



Trips, Themed Days and Special Events

Year 4 will be going on their residential trip to the Pioneer Centre on Wednesday 26th November - Friday 28th November 2025.

The Year 4 Parents' Residential Meeting will be held on Thursday 6th November 2:45 - 3:15pm where we will be able to discuss this trip in more detail with you if your child is attending.



How parents can best support learning

- Reading before bed
- Daily times tables practise - TTRockstars
- Spelling practise - spellings will be coming home soon.
- Handwriting practise - joining as much as possible
- Encouraging independence & resilience



Any questions?

- If you ever need a chat/ meeting, please contact us via the info@ email info@belle-vue.dudley.sch.uk
- If your query is regarding school administration, please telephone the office (01384 389900) or send an email to the office on info@belle-vue.dudley.sch.uk
- If you need a Designated Safeguarding Lead please contact the school office and ask to speak to Mrs Claire Davies (Deputy Head). If Mrs Davies is not available, you will be able to speak to Mrs. Mulligan or Mrs. Perrett (Deputy DSLs).

